

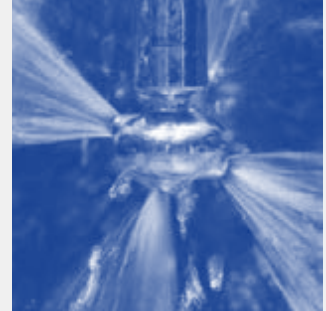


Rotating cleaning nozzle »Whirly 2« Series 5W9

NEW

Series 5W9

Popular and proven: the design of the Whirly 2. It generates effective flat jets, offers various connection options and is available in a very wide range of flow rates. It is also available in an ATEX-approved version and in a range of versions with different spray angles.



Function video
www.lechler.com/de-en/medialibrary
Or scan the QR Code.

	Max. tank diameter [m]	0	1	2	3	4	5	6	7	8
--	-------------------------------	---	---	---	---	---	---	---	---	---



Materials
316L, PEEK



Max. temperature
140 °C



Recommended operating pressure
2 bar



Installation
Operation in every direction is possible



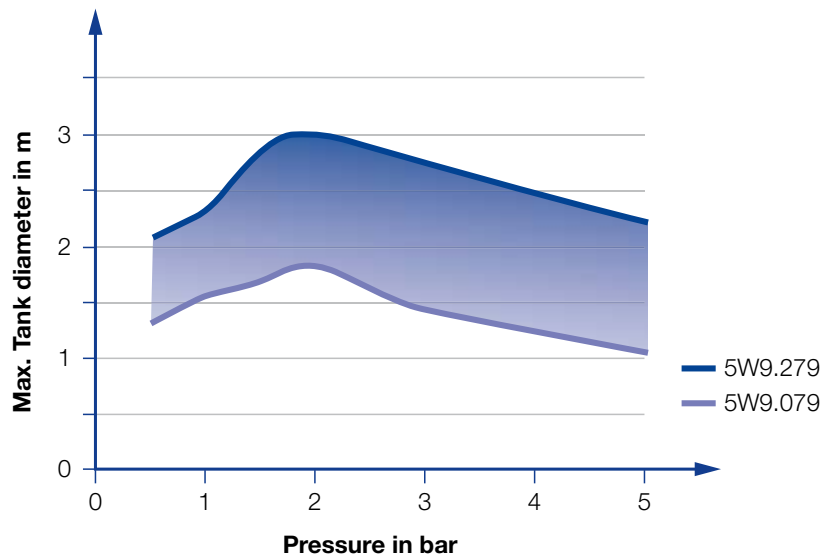
Filtration
Line strainer with a mesh size of 0.1 mm/170 Mesh



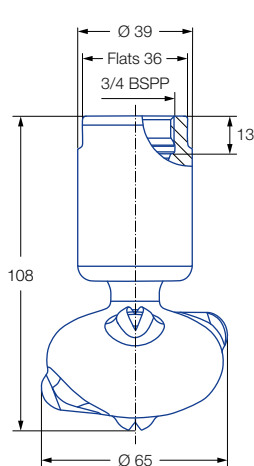
Bearing
Double ball bearing made of 316L



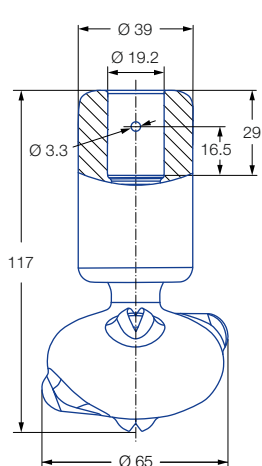
Adapter
3/4 BSPP is compatible with HygienicFit



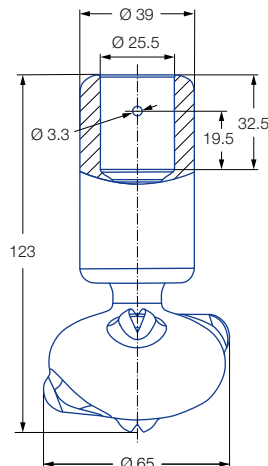
Overview of the maximum tank diameter, depending upon the pressure of series 5W9



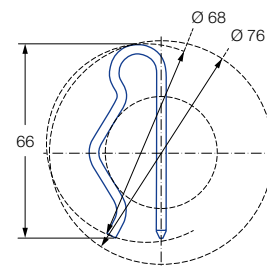
Female thread







Dimensions of the 3/4" slip-on connection according to ASME-BPE (OD-tube)



Dimensions of the 1" slip-on connection according to ASME-BPE (OD-tube)



Dimensions slip-on connection top-view

Spray angle 	Ordering no.				E Ø [mm]	V [l/min]				Max. tank diameter [m]
	Type	Code				p [bar] (p _{max} = 6 bar)				
		3/4 BSPP	3/4" Connection	1" Connection		1	2	3	at 40 psi [US gal./min]	
270° 	5W9.075.1Y	AL	TF07	TF10	2.0	34	48	59	15	1.8
	5W9.145.1Y	AL	TF07	TF10	2.8	50	71	87	22	2.1
	5W9.195.1Y	AL	TF07	TF10	3.3	69	97	119	30	2.6
270° 	5W9.076.1Y	AL	TF07	TF10	2.0	34	48	59	15	1.8
	5W9.106.1Y	AL	TF07	TF10	2.5	41	58	71	18	2.1
	5W9.196.1Y	AL	TF07	TF10	3.4	69	97	119	30	2.6
360° 	5W9.079.1Y	AL	TF07	TF10	1.6	34	48	59	15	1.8
	5W9.149.1Y	AL	TF07	TF10	2.4	50	71	87	22	2.1
	5W9.199.1Y	AL	TF07	TF10	3.0	69	97	119	30	2.6
	5W9.279.1Y	AL	TF07	TF10	3.5	103	145	178	45	3.0

E = narrowest free cross-section · NPT on request

The maximum tank diameter shown above applies for the recommended operating pressure and is indicative only. The cleaning result is also affected by the type of soiling.


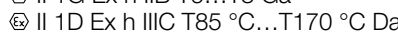
Information on operation




- Operation with compressed air only for short-term usage. Operation above the recommended operating pressure has negative effects on the cleaning result and wear.

Slip-on information

- Split pin made of 316L SS is included (Ordering no.: 095.022.1Y.06.72.0).
- Depending on diameter of the adapter the flow rate can increase due to leakage between connecting pipe and rotating cleaning nozzle.
- Minimum insertion diameter (with mounted split pin) is 68 mm.

Example of ordering with ATEX approval. FDA and (EC) 1935/2004 conform.



Unit group/category/zones:
 II 1G Ex h IIB T6...T3 Ga
 II 1D Ex h IIIC T85 °C...T170 °C Da

Ordering Type + Connection = Ordering no.
 example: 5W9.075.1Y.XX.EX + AL = 5W9.075.1Y.AL.EX

Example of ordering with FDA and (EC) 1935/2004 conformity.

All Materials are suitable for contact with food.

Ordering Type + Connection = Ordering no.
 example: 5W9.075.1Y.XX + AL = 5W9.075.1Y.AL

Attention: for the ATEX version of the slip-on connection the code for the connection changes. Ordering example for connection TF.07: 5W9.075.1Y.T2.EX/ ordering example for connection TF.10: 5W9.075.1Y.T3.EX