



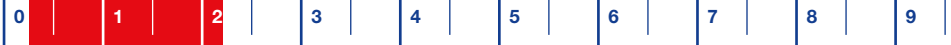
# Pop-up rotating cleaning nozzles »PopUp Whirly« Series 5P2/5P3

## Series 5P2/5P3

When a certain fluid pressure is reached, the rotating cleaning nozzle of PopUp Whirly is automatically extended from the enclosure. These free-spinning rotating nozzles can be installed flush in the tank wall. They are also suitable for cleaning pipes and for applications that use foam. They are of particular interest for applications in the food and beverage industry as well as for the pharmaceutical and chemical industry.



**Max. tank diameter [m]**



### Materials

316L SS,  
316Ti SS (spring),  
316 SS (snap ring),  
PEEK (slide-bearing),  
FKM (O-ring)



### Max. temperature

140 °C



### Recommended operating pressure

2 bar, 5P2: opening pressure approx. 1.0 bar, closing pressure approx. 0.5 bar,  
5P3: opening pressure approx. 0.9 bar, closing pressure approx. 0.5 bar



### Installation

Operation in every direction is possible



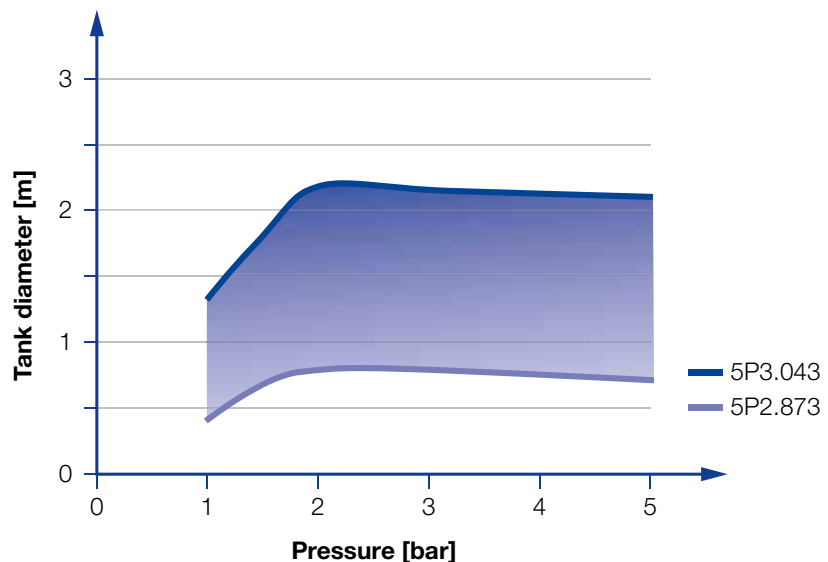
### Filtration

Line strainer with a mesh size of 0.3 mm/50 mesh



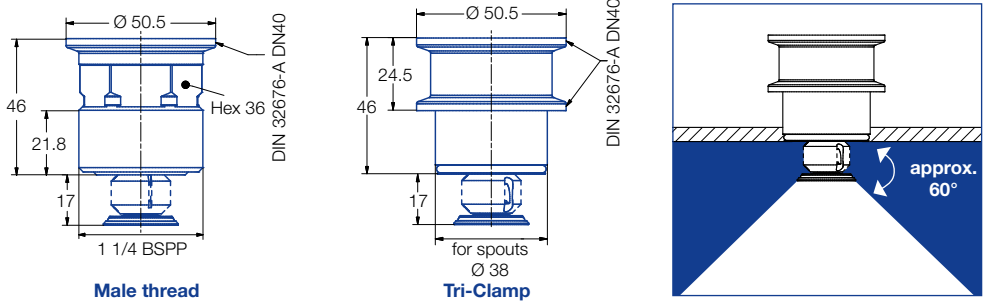
### Bearing

Slide bearing made of PEEK



Overview of the tank diameter, depending upon the pressure of series 5P2/5P3

### Series 5P2

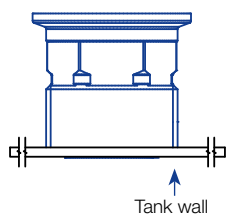


Spray angle	Ordering no.	Tank connection		E Ø [mm]	V [l/min]				Max. tank diameter [m]
		1 1/4 BSPP	Tri-Clamp		p [bar] (p <sub>max</sub> = 6 bar)				
					1	2	3	at 40 psi [US gal/min]	
	<b>5P2.873.1Y.AP</b>	○	-	1.0	10.6	15.0	18.4	5	0.8
	<b>5P2.873.1Y.00</b>	-	○	1.0	10.6	15.0	18.4	5	0.8
	<b>5P2.923.1Y.AP</b>	○	-	2.4	14.1	20.0	24.5	6	1.0
	<b>5P2.923.1Y.00</b>	-	○	2.4	14.1	20.0	24.5	6	1.0

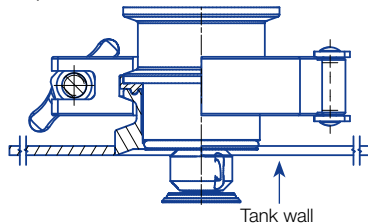
The maximum tank diameter shown above applies for the recommended operating pressure and is indicative only. The cleaning result is also affected by the type of soiling.

### Nozzle installation

Via thread in idle position



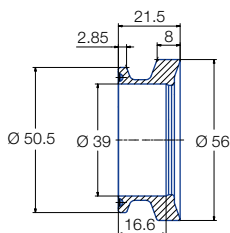
Via Tri-Clamp in operating position



### Information on operation

- The PopUp Whirly is not suitable for operation with compressed air or any other gas.
- Operation above the recommended operating pressure has negative effects on the cleaning result and wear.

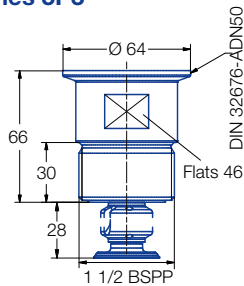
### Weld-in flange for Tri-Clamp-Version



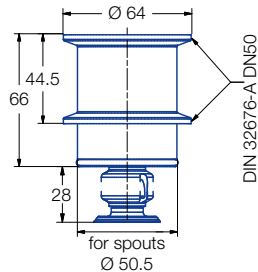
**Ordering number**  
050.020.1Y.01.00  
**Material**  
316L SS

**Information**  
Gasket with a thickness of 2 mm must be used if the PopUp Whirly is installed with this weld-in flange.

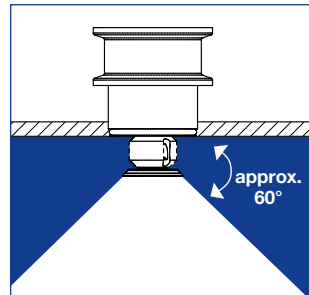
## Series 5P3



Male thread



Tri-Clamp

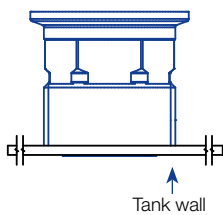


Spray angle	Ordering no.	Tank connection		E Ø [mm]	V [l/min]				Max. tank diameter [m]
		1 1/2 BSPP	Tri-Clamp		p [bar] (p <sub>max</sub> = 6 bar)				
					1	2	3	at 40 psi [US gal/min]	
	<b>5P3.043.1Y.AR</b>	○	-	3.2	28.3	40	49	12	2.2
	<b>5P3.043.1Y.00</b>	-	○	3.2	28.3	40	49	12	2.2

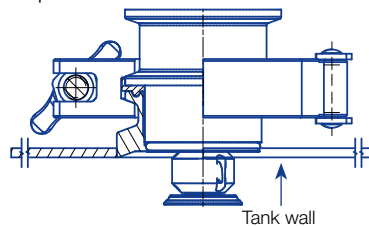
The maximum tank diameter shown above applies for the recommended operating pressure and is indicative only. The cleaning result is also affected by the type of soiling.

## Nozzle installation

Via thread in idle position



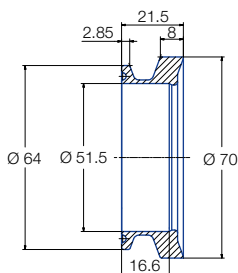
Via Tri-Clamp in operating position



## Information on operation

- The PopUp Whirly is not suitable for operation with compressed air or any other gas.
- Operation above the recommended operating pressure has negative effects on the cleaning result and wear.

## Weld-in flange for Tri-Clamp-Version



### Ordering number

050.020.1Y.01.01

### Material

316L SS

### Information

Gasket with a thickness of 2 mm must be used if the PopUp Whirly is installed with this weld-in flange.